







Advance marine research and innovation in the Black Sea to identify the operating space for the safe development of human activities under multistressors conditions and to support the development a **fully sustainable Blue Economy** in the sea basin.



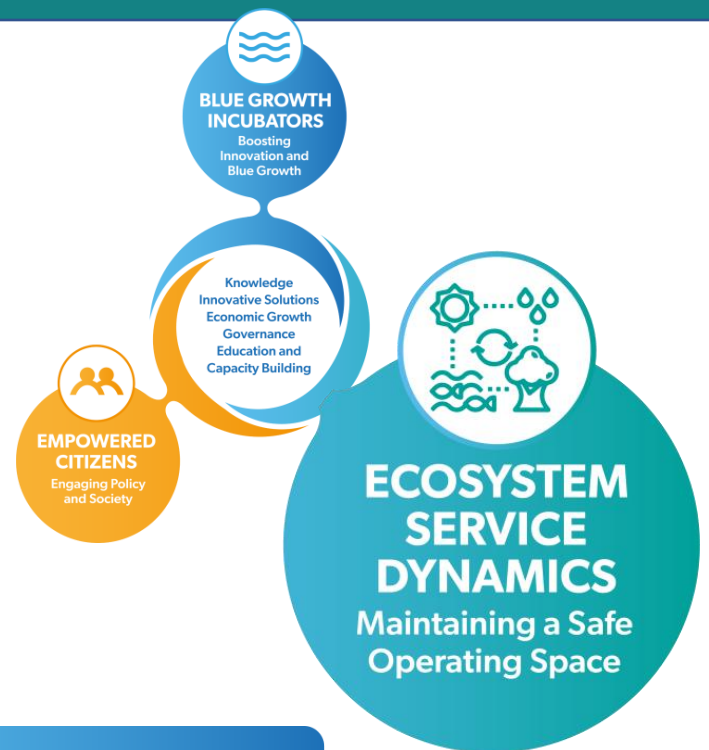
Blue Economy Sectors

- 
MARINE TRANSPORTATION
- 
FISHERIES
- 
AQUACULTURE
- 
BIOTECH
- 
COASTAL TOURISM
- 
OFFSHORE WIND PLATFORMS

STRESSORS in natural systems, caused by natural processes or by direct influence of human activities, can damage ecosystem health, harm organisms and hurt the well-being of coastal populations.

Their effect combines to impact the Black Sea forming **MULTISTRESSORS** that cause degradation of its marine ecosystem.

BRIDGE-BS is creating new, integrated, adaptive, comprehensive models and data analyses to assess the risks posed by these **multistressors** and find out how they affect the functioning and resilience of marine ecosystems.



BLACK SEA MULTISTRESSORS



DISCUSSION POINTS

- Existing national policies, programmes or tools that address multistressors' impact.
- Identification of other multistressors taken into account by national policies.
- Gaps in existing policies and priorities in the policy agenda related to multistressors impact and mitigation.
- Research and innovation community to support policy-making.
- Expected role of BRIDGE-BS in supporting the development of new, or the adaptation of existing policies, in addressing multistressors.

BRIDGE-BS ACCELERATION PROGRAMME

WHAT – support services to speed up the market uptake of innovative solutions, including through the generation of new waves of dedicated start-ups and SMEs;

WHOM – targeted to Black Sea-based applicants | also open to non-regional applicants interested in expanding their solutions;

WHY – to translate science into business opportunities.

TARGET SECTORS & SUPPORT SERVICES

- ✓ Observation and monitoring
- ✓ Ports, Transport & Logistics
- ✓ Fisheries & Aquaculture
- ✓ Tourism & recreational activities
- ✓ Blue-biotechs and related products
- ✓ Sustainable and renewable energy
- ✓ Nature-based services/solutions (coastal/marine)



DISCUSSION POINTS

- Existing national policies, services and tools supporting start-ups, Public-Private Partnerships, networking and clusters in the target sectors.
- Gaps in existing policies and priorities in the policy agenda for the support of innovation and business development.
- Identification of innovative and science-based business models to be promoted through the BRIDGE-BS accelerator.
- Criteria to prioritise specific sectors and support services, according to national/local needs and priorities.

OCEAN LITERACY

- An understanding of our individual and collective impact on the Ocean and its impact on our lives and wellbeing
- Hands on Marine Sciences activities for school children and university students
- Awareness-raising campaigns for citizens
- Build a network to support the ocean literacy community of the Black Sea

INVESTING IN TRAINING & EDUCATION

- PhD Programme on Blue Economy
- Science-Technology-Policy MSc on Blue Economy (in English)
- 2 Summer Schools on Blue Economy sectors

MOBILITY AND EMPLOYMENT

- Virtual Blue Career Centre
- Blue Move activity



DISCUSSION POINTS

- Existing national policies, programmes or tools that address ocean literacy and skills development.
- Gaps in existing policies and priorities in the policy agenda related to skills development and ocean literacy.
- Identification of suitable interlocutors for “injecting” the concept of ocean literacy to schools and society.
- Development of training programmes for policy stakeholders.